

LEAD FREE*

Series LF622F/FT/UF/UFT Lead Free* Bronze, Full Port Ball Valves

Size: 1/2" - 2" (15mm - 50mm)

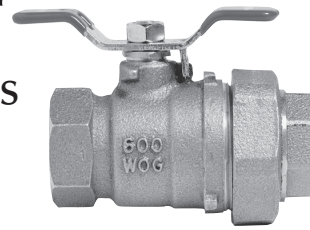
Features

- The FEBCO Series LF622F/FT/UF/UFT available with tapped outlet suitable for the installation of a pressure gauge or test cock. LF622UF/UFT with Union Ends.
- The LF622 features Lead Free* construction to comply with Lead Free* installation requirements.
- Tee handle standard on 1/2" through 1 1/4" sizes (15mm – 32mm).
- Lever handle standard on 1 1/2" through 2" sizes (40mm – 50mm).
- Full port design for low pressure drop.
- Pressure rated at 600psi (41.4 bar) WOG, (non-shock) 1/2"-2" (15mm – 50mm) (DN15-DN50) and 125psi (8.6 bar) saturated steam.
- Suitable for temperature from 0°F to +350°F (-18°C to 177°C) at 50psi (345 kPa).
- PTFE stem packing seal, thrust washer and seat.
- Plated carbon steel handle with vinyl insulator.
- Quarter-turn open or close operation.
- Ideal for throttling and balancing applications of non-abrasive fluids where minimum flow is 20% to 100% of valve capacity.
- Low operating torque.
- Adjustable stem packing gland.
- Bottom loaded, pressure retaining stem.

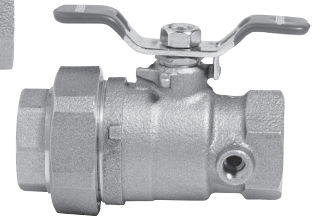
Options

LF622F: Full Port Thread x Thread Ball Valve
 LF622FT: Full Port Thread x Thread Ball Valve with Tapped Side Outlet
 LF622 UF: Full Port Thread x Thread Ball Valve with (1) Union End
 LF622 UFT: Full port Thread x Thread Ball Valve with (1) Union End with Tapped Side Outlet

*The wetted surface of this product contacted by consumable water contains less than one quarter of one percent (0.25%) of lead by weight.

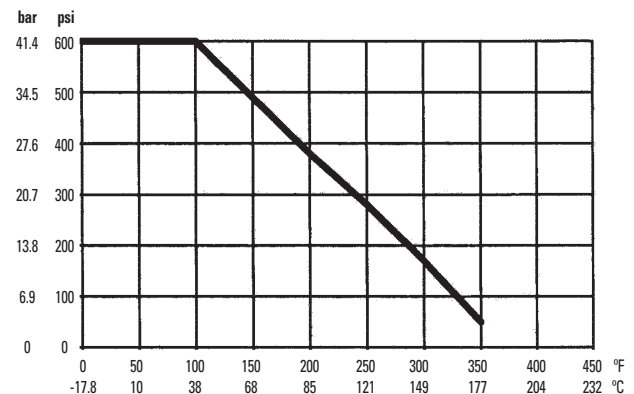


Series LF622UF



Series LF622UFT

Seat Rating



Specification

Approved valves shall have bottom loaded pressure retaining stems, PTFE seats and full port. Valve shall be pressure rated at 600psi (41.4 bar) WOG (non-shock), 125psi (8.6 bar) saturated steam. Valve must conform to Federal Specification WWV-V-35C, Type II, Composition, BZ, Style 3, End Connection A. The Lead Free* bronze full port ball valves shall comply with state codes and standards, where applicable, requiring reduced lead content. Valve shall be a FEBCO Series LF622F.

CV Factor

SIZE		GPM		LITERS	
in.	mm.	C _v (gpm / √psi)	C _v (L / √psi)		
1/2	15	15	56.8		
3/4	20	30	113.6		
1	25	60	227.1		
1 1/4	32	110	416.4		
1 1/2	40	130	492.1		
2	50	360	1362.7		

Job Name _____

Job Location _____

Engineer _____

Approval _____

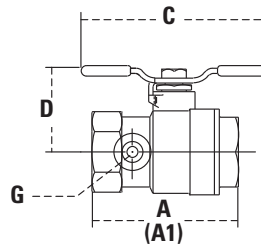
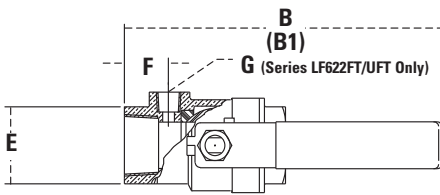
Contractor _____

Approval _____

Contractor's P.O. No. _____

Representative _____

Dimensions – Weights



Size: 1/2" - 2" (15 - 50mm)

SIZE (DN)		SERIES LF622UF / UFT DIMENSIONS																WEIGHT					
		A		A1 (union)		B		B1 (union)		C		D		E		F		G		622FT		622UFT	
in.	mm	in.	mm	in.	mm	in.	mm	in.	mm	in.	mm	in.	mm	in.	mm	in.	mm	in.	mm	lbs.	kgs.	lbs.	kgs.
1/2	15	2 3/8	61	3 1/2	79					3 3/8	79	1 7/16	36	1	25	5/8	16	1/8 - 27	n/a	.6	.3	.7	.3
3/4	20	2 5/8	67	3 1/2	89					3 3/8	79	1 5/8	41	1 1/4	32	3/4	19	1/8 - 27	n/a	.8	.4	1.1	.5
1	25	3 1/8	79	4	102					3 3/16	91	2	51	1 1/2	38	13/16	20	1/8 - 27	n/a	1.3	.6	1.6	.7
1 1/4	32	3 3/8	92	4 9/16	116					3 3/16	91	2 1/16	53	1 13/16	46	13/16	21	1/4 - 18	n/a	2.3	1.0	2.4	1.1
1 1/2	40	3 7/8	99	5	129	8 1/2	216	9 1/2	241			3	76	2 3/16	55	13/16	21	1/4 - 18	n/a	3.2	1.4	3.7	1.7
2	50	4 7/16	113	5 11/16	144	8 1/2	216	9 5/8	244			3 1/2	89	2 3/4	70	13/16	21	1/4 - 18	n/a	5.6	2.5	6.4	2.9

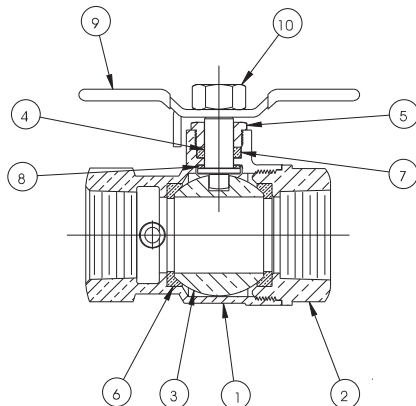
Note: Dimensions are nominal. Allowances must be made for normal manufacturing tolerances.

Size: 1/2" - 2" (15 - 50mm)

SIZE (DN)		SERIES LF622F / LF622UF DIMENSIONS												WEIGHT					
		A		A1		B		B1		C		D		E		622FT		622UFT	
in.	mm	in.	mm	in.	mm	in.	mm	in.	mm	in.	mm	in.	mm	in.	mm	lbs.	kgs.	lbs.	kgs.
1/2	15	2 3/16	55	3	74					3 3/8	79	1 7/16	36	1	25	.6	.3	.7	.3
3/4	20	2 5/8	61	3 1/4	82					3 3/8	79	1 5/8	41	1 1/4	32	.7	.3	1.0	.5
1	25	2 7/8	73	3 3/4	96					3 3/16	91	2	51	1 1/2	38	1.3	.6	1.6	.7
1 1/4	32	3 1/4	83	4 3/16	107					3 3/16	91	2 1/16	53	1 13/16	46	2.0	.9	2.4	1.1
1 1/2	40	3 5/8	92	4 3/4	120	8	206	9	231			3	76	2 3/16	55	3.1	1.4	3.6	1.7
2	50	4 3/16	106	5 3/8	137	8 3/8	213	9 11/16	246			3 1/2	89	2 3/4	70	5.3	2.4	6.3	2.9

Note: Dimensions are nominal. Allowances must be made for normal manufacturing tolerances.

Materials of Construction



1. Body - Lead Free* Bronze
2. End Cap - Lead Free* Bronze
3. Ball - Chrome Plated Lead Free* Brass
4. Stem - Lead Free* Brass
5. Packing Nut - Lead Free* Brass
6. Ball Seal - PTFE
7. Packing - PTFE
8. Stem Washer - PTFE
9. Handle - Plated Steel w/ Vinyl Insulator
10. Nut - Plated Steel



A Watts Water Technologies Company

USA: 4381 N. Brawley • Ste. 102 • Fresno, CA • 93722 • Tel. (559) 441-5300 • Fax: (559) 441-5301 • www.FEBCOonline.com
 Canada: 5435 North Service Rd. • Burlington, ONT. • L7L 5H7 • Tel. (905) 332-4090 • Fax: (905) 332-7068 • www.FEBCOonline.ca



ISO 9001-2000
CERTIFIED