

For Snowmelt Applications

Job Name _____
 Job Location _____
 Engineer _____
 Approval _____

Contractor _____
 Approval _____
 Contractor's P.O. No. _____
 Representative _____

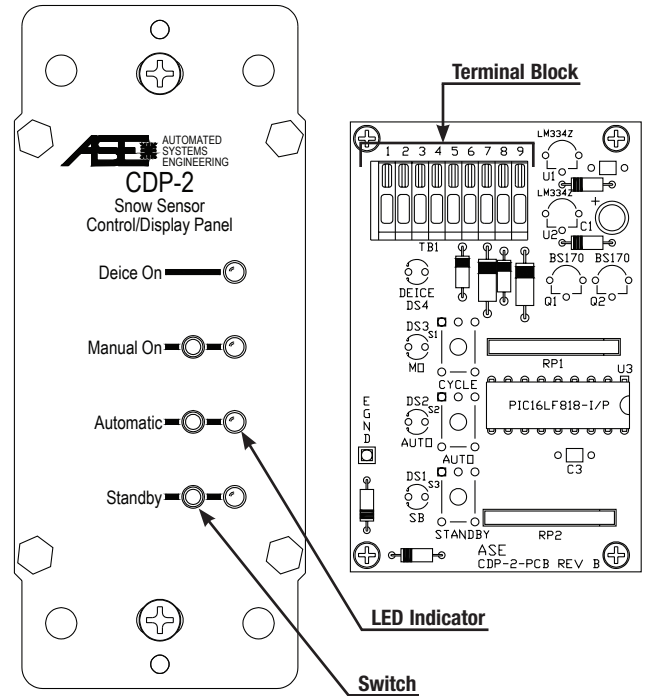
PM-DP Display Panel

For use with PM-2B Sensor

The PM-DP provides direct remote operation for the PM-2B snow sensor. Users can monitor both the operating mode and the activation state of the sensor. Additional control features include setting automatic, manual, or standby operation

Specifications

Supply Voltage	Derived from Snow Sensor
Compatible Sensors	PM-2B PM-224 PM-824
Operating Temperature Range	(-40°F) to 185°F
Modes	Automatic Manual Standby
Dry Cycle Time	Based on Sensor Setting
Location Used	Indoor
Wiring Type	22 AWG (minimum) 5 or 6 Conductor
Maximum Distance	800 ft.



PM-DP fits directly into a single gang box and can be fitted with a standard "modular" electrical cover plate. A CS-1 pigtail is included with the PM-DP.

Features

The PM-DP offers the ability to monitor or operate the snowmelting system from a remote location.

Function	Feature
Standby	Set snow sensor to ignore precipitation
Automatic	Automatically activates snowmelt system based on sensor settings for temperature, precipitation, and run time
Manual	Will activate the snowmelt system for the "dry cycle" time determined by the sensor. Will automatically return to Automatic mode upon completion

The corresponding LED will blink, indicating operation, instead of remaining constant.

Product Options

Description	Order #
PM-DP Remote Control	81011697

⚠ WARNING: General Safety Instructions

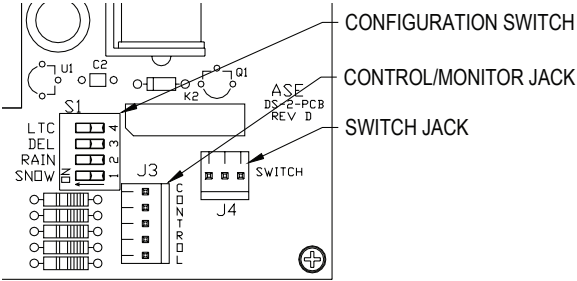
- THIS UNIT SHOULD BE INSTALLED ONLY BY QUALIFIED PERSONNEL!**
- Disconnect all power from the control before opening the front cover plate.



Watts product specifications in U.S. customary units and metric are approximate and are provided for reference only. For precise measurements, please contact Watts Technical Service. Watts reserves the right to change or modify product design, construction, specifications, or materials without prior notice and without incurring any obligation to make such changes and modifications on Watts products previously or subsequently sold.

Installation

Install the PM-DP remote switch in a single gang box. The PM-DP may be installed in a conventional single or multi-gang electrical enclosure. If installed in a multi-gang enclosure next to high voltage equipment, the PM-DP and its interconnecting cable must be isolated from high voltage wires and devices. Consult local electrical codes to determine the isolation method(s) required. The PM-DP can be installed up to 800 feet away from the PM-2B snow sensor.



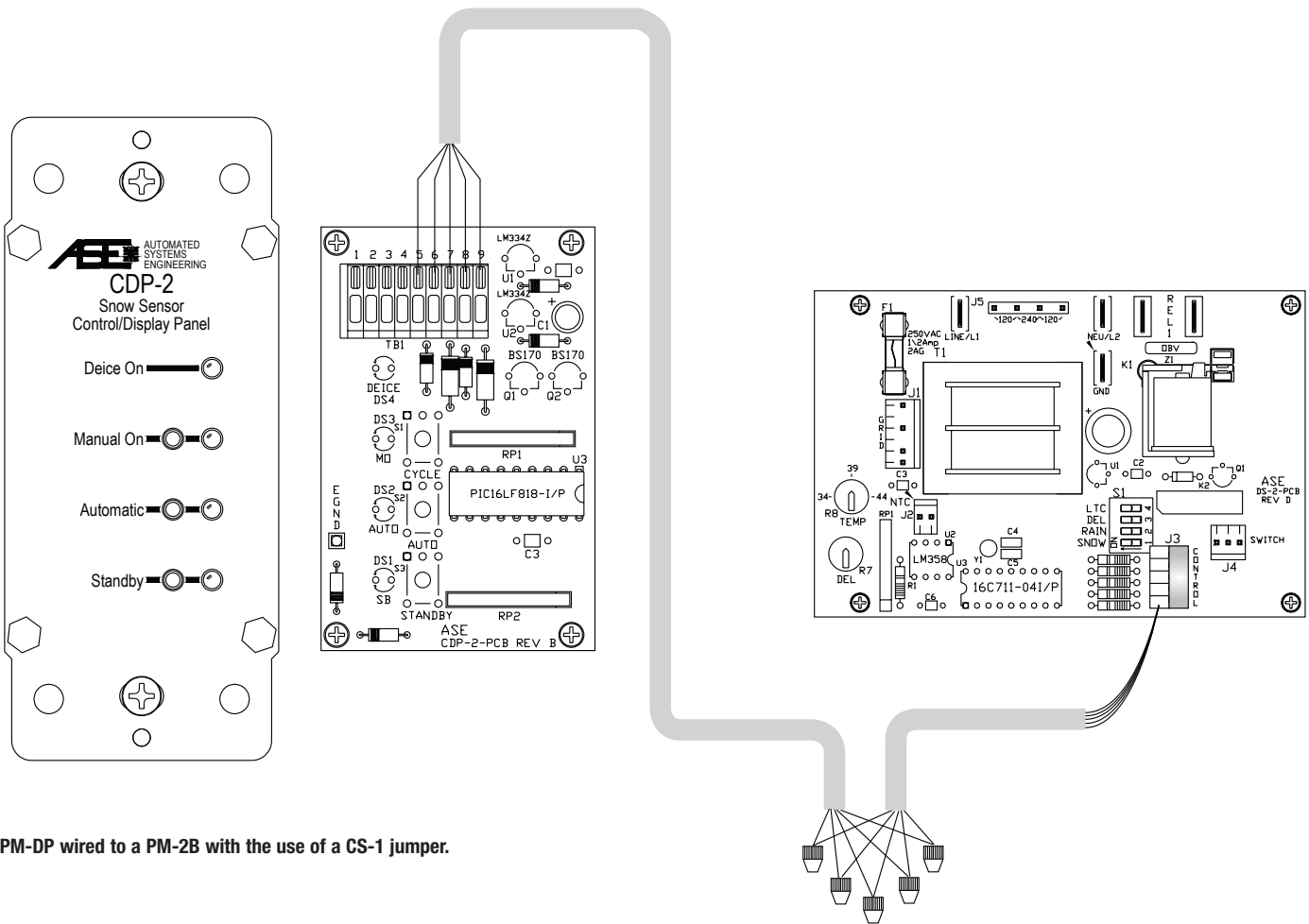
Plug the CS-1 Pigtail into the jack labeled J3 on the PM-2B circuit board. Cut the required length of 5- or 6-conductor minimum 22 AWG shielded cable. Prepare both ends of this cable by removing 2 inches of outer jacket and shield, then strip 1/4" of the insulation from the conductors. Attach one end of this cable to the free end of the CS-1 Pigtail, noting any

CS-1 Color	Function	Field Color	PM-DP Terminal
Black	Manual On		5
White	Return		6
Green	Standby/Reset		7
Orange	Deice On		8
Red	Deice On		9

color code change in the table. Following this table, attach the other end of this cable to the terminal block labeled TB1 on the PM-DP. To do this, press the clamp button on the terminal block, insert the bare wire end, then release. Lightly tug on the wire to ensure it is connected.

Use terminals 1-4 on TB1 when connecting to a Home Automation System (HAS). Closure of terminals 1-2 (Trigger) and 3-4 (Enable) will start one snowmelting cycle. Once the cycle is completed the sensor will revert to Automatic mode.

Connect a toggle switch to the Enable terminals to allow manual enabling and disabling of the HAS. If a secondary toggle switch is not used, jumper terminals 3-4 to all the HAS to enable the system as needed.



PM-DP wired to a PM-2B with the use of a CS-1 jumper.