

**NEW**

# R-flex™

insulated piping systems



Insulated supply and return piping for:

- Hydronic heating
- Hydronic snow melting
- District heating
- Commercial and process piping
- Geothermal
- Agricultural piping
- Biomass heat sources
- Wood-fired boilers
- Solar
- Cooling towers & chilled water systems



### A solid proven system.

R-flex is a pre-insulated, flexible, energy-saving PEX piping system with a durable, waterproof outer cover. It consists of a long-lasting PEX carrier pipe or pipes surrounded by thick insulation layers, all contained in a unique double-wall outer casing for maximum protection. The flexibility and light weight of R-flex makes it far easier to install than rigid piping systems.

### Superior protection.

Surrounding the inner PEX carrier pipe are several layers of cross-linked polyethylene foam with a closed cellular structure. This unique design provides R-flex with a low water vapor absorption, enhanced R-value insulation, and an excellent resistance to extreme temperatures.

Most importantly, R-flex is able to maintain these insulation properties over time. Other insulation types, such as polyurethane (PUR) foam, can crush when the pipe is bent, causing them to lose their insulative properties.

### Barrier PEX offers several advantages.

- high resistance to corrosion and pressure at high temperatures
- exceptionally high abrasion resistance
- superb chemical resistance
- proven product with excellent longevity at high temperatures

### Flexible, fast, and easy.

R-flex derives a unique benefit from the use of the polyethylene foam insulation and the double-wall outer shell; increased flexibility. This feature provides an advantage when running R-flex between buildings, around trench corners, or through wall penetrations.

### The art of simplicity.

Traditional carrier pipes, such as copper or black iron, require installers to cut and install transition fittings to work around an obstacle. With R-flex, installers no longer have to cut pipe and add connecting points. R-flex bends around the obstacle.

### Design it with RadiantWorks Professional®

RadiantWorks Professional allows designers to properly determine the amount of R-flex required for a project and an estimated amount of transitional heat loss.

Design it once. Design it right. Design with RadiantWorks Professional!



## R-flex Single & Dual Coils

R-flex is a flexible pre-insulated PEX with a corrugated, double-wall HDPE cover suitable for direct burial. R-flex is manufactured in accordance with DIN 16892/16893, with a DIN 4726 oxygen barrier.

R-flex ratings: 200 Deg F at 80 psi; 180 Deg F at 100 psi; 73 Deg F at 160 psi

**See page 94 for more sizing information.**

**To calculate the total length of R-flex needed, add 5% to the straight-line distance measured. This accounts for laying R-flex in a serpentine pattern. Also be sure to account for the length of all bends. See the R-flex Design and Installation Manual for more details.**



**R-flex Single 328' Coils** – Pre-insulated single oxygen barrier PEX with corrugated, double-wall HDPE cover.

DESCRIPTION	QTY.	MODEL#	ORDER#	WT.LBS.
40mm (~ 1.5") x 160mm OD Jacket, R-flex Single	1	RFS-40X160-328	81012929	517
50mm (~ 2") x 160mm OD Jacket, R-flex Single	1	RFS-50X160-328	81012886	552
63mm (~ 2.5") x 160mm OD Jacket, R-flex Single	1	RFS-63X160-328	81012887	618
75mm (~ 3") x 200mm OD Jacket, R-flex Single	1	RFS-75X200-328	81012889	922
90mm (~ 3.5") x 200mm OD Jacket, R-flex Single	1	RFS-90X200-328	81012890	1048
110mm (~ 4") x 200mm OD Jacket, R-flex Single	1	RFS-110X200-328	81012891	1250

**R-flex Single** – Custom lengths

DESCRIPTION	QTY.	MODEL#	ORDER#	WT.LBS.
40mm (~ 1.5") x 160mm OD Jacket, R-flex Single		RFS-40X160-1	81012951	1.56/ft.
50mm (~ 2") x 160mm OD Jacket, R-flex Single		RFS-50X160-1	81012952	1.67/ft.
63mm (~ 2.5") x 160mm OD Jacket, R-flex Single		RFS-63X160-1	81012953	1.87/ft.
75mm (~ 3") x 200mm OD Jacket, R-flex Single		RFS-75X200-1	81012954	2.8/ft.
90mm (~ 3.5") x 200mm OD Jacket, R-flex Single		RFS-90X200-1	81012955	3.18/ft.
110mm (~ 4") x 200mm OD Jacket, R-flex Single		RFS-110X200-1	81012956	3.79/ft.

**Note:** A cut charge will be incurred with custom cut lengths.

**R-flex Dual 328' Coils** – Pre-insulated dual oxygen barrier PEX with corrugated, double-wall HDPE cover.

DESCRIPTION	QTY.	MODEL#	ORDER#	WT.LBS.
1" x 125mm OD Jacket, R-flex Dual	1	RFD-1X125-328	81012879	363
32mm (~ 1.25") x 125mm OD Jacket, R-flex Dual	1	RFD-32X125-328	81012880	407
40mm (~ 1.5") x 160mm OD Jacket, R-flex Dual	1	RFD-40X160-328	81012882	585
50mm (~ 2") x 200mm OD Jacket, R-flex Dual	1	RFD-50X200-328	81012884	894
63mm (~ 2.5") x 200mm OD Jacket, R-flex Dual	1	RFD-63X200-328	81012885	1028

**R-flex Dual** – Custom lengths

DESCRIPTION	QTY.	MODEL#	ORDER#	WT.LBS.
1" x 125mm OD Jacket, R-flex Dual		RFD-1X125-1	81012957	1.09/ft.
32mm (~ 1.25") x 125mm OD Jacket, R-flex Dual		RFD-32X125-1	81012958	1.23/ft.
40mm (~ 1.5") x 160mm OD Jacket, R-flex Dual		RFD-40X160-1	81012959	1.77/ft.
50mm (~ 2") x 200mm OD Jacket, R-flex Dual		RFD-50X200-1	81012960	2.71/ft.
63mm (~ 2.5") x 200mm OD Jacket, R-flex Dual		RFD-63X200-1	81012961	3.12/ft.

**Note:** A cut charge will be incurred with custom cut lengths.

## R-flex Dust Caps & Shrink Caps

**Single Pipe Dust Caps** – Non-waterproof - for interior terminations.



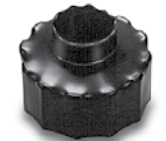
DESCRIPTION	QTY.	MODEL NO.	ORDER NO.	WT.LBS.
40mmx1, 160mm OD, R-flex Single Pipe Dust Cap	1	RFDC-40X1X160	81012967	0.5
50mmx1, 160mm OD, R-flex Single Pipe Dust Cap	1	RFDC-50X1X160	81012934	0.5
63mmx1, 160mm OD, R-flex Single Pipe Dust Cap	1	RFDC-63X1X160	81012935	0.5
75mmx1, 200mm OD, R-flex Single Pipe Dust Cap	1	RFDC-75X1X200	81012936	0.5
90mmx1, 200mm OD, R-flex Single Pipe Dust Cap	1	RFDC-90X1X200	81012937	0.5
110mmx1, 200mm OD, R-flex Single Pipe Dust Cap	1	RFDC-110X1X200	81012938	0.5

**Dual Pipe Dust Caps** – Non-waterproof - for interior terminations.



DESCRIPTION	QTY.	MODEL NO.	ORDER NO.	WT.LBS.
1" x 2, 125mm OD, R-flex Dual Pipe Dust Cap	1	RFDC-1X2X125	81012939	0.5
32mm x 2, 125mm OD, R-flex Dual Pipe Dust Cap	1	RFDC-32X2X125	81012940	0.5
40mm x 2, 160mm OD, R-flex Dual Pipe Dust Cap	1	RFDC-40X2X160	81012941	0.5
50mm x 2, 200mm OD, R-flex Dual Pipe Dust Cap	1	RFDC-50X2X200	81012942	0.5
63mm x 2, 200mm OD, R-flex Dual Pipe Dust Cap	1	RFDC-63X2X200	81012943	0.5

**Single Pipe Shrink Caps** – Waterproof - required for all direct burial connections in protective casings or inspection chamber.



DESCRIPTION	QTY.	MODEL NO.	ORDER NO.	WT.LBS.
40-50mm x 1, 160mm OD, R-flex Single Pipe Shrink Cap	1	RFSC-40-50X1X160	81012664	0.5
63mm x 1, 160mm OD, R-flex Single Pipe Shrink Cap	1	RFSC-63X1X160	81012540	0.5
75-110mm x 1, 200mm OD, R-flex Single Pipe Shrink Cap	1	RFSC-75-110X1X200	81012541	0.5

**Dual Pipe Shrink Caps** – Waterproof - required for all direct burial connections in protective casings or inspection chamber.



DESCRIPTION	QTY.	MODEL NO.	ORDER NO.	WT.LBS.
1" x 2 x 125mm OD, R-flex Dual Pipe Shrink Cap	1	RFSC-1X2X125	81012542	0.5
32mm x 2 x 125mm OD, R-flex Dual Pipe Shrink Cap	1	RFSC-32X2X125	81012543	0.5
40mm x 2 x 160mm OD, R-flex Dual Pipe Shrink Cap	1	RFSC-40X2X160	81012544	0.5
50mm x 2 x 200mm OD, R-flex Dual Pipe Shrink Cap	1	RFSC-50X2X200	81012545	0.5
63mm x 2 x 200mm OD, R-flex Dual Pipe Shrink Cap	1	RFSC-63X2X200	81012546	0.5

**Debris Plugs for R-flex PEX** – Use these to cap R-flex and keep jobsite debris out of the PEX tubing.



DESCRIPTION	QTY.	MODEL NO.	ORDER NO.	WT.LBS.
1", R-flex Pex Plug	1	RFPP-1"	81013021	0.5
32mm, R-flex Pex Plug	1	RFPP-32mm	81013022	0.5
40mm, R-flex Pex Plug	1	RFPP-40mm	81013023	0.5
50mm, R-flex Pex Plug	1	RFPP-50mm	81013024	0.5
63mm, R-flex Pex Plug	1	RFPP-63mm	81013025	0.5
75mm, R-flex Pex Plug	1	RFPP-75mm	81013026	0.5
90mm, R-flex Pex Plug	1	RFPP-90mm	81013027	0.5
110mm, R-flex Pex Plug	1	RFPP-110mm	81013028	0.5

## R-flex Connections

**Compression Adapters** – PEX x MNPT, brass – for connecting R-flex to metal fittings. Included steel plate and bolt make it easy to slide collar over PEX.



DESCRIPTION	QTY.	MODEL NO.	ORDER NO.	WT.LBS.
1" x 1" MNPT, R-flex, Adapter, Comp	1	RFA-1X100MPT	81012552	1.0
32mm x 1" MNPT, R-flex, Adapter, Comp	1	RFA-32X100MPT	81012553	1.0
40mm x 1-1/4" MNPT, R-flex, Adapter, Comp	1	RFA-40X125MPT	81012554	1.5
50mm x 1-1/2" MNPT, R-flex, Adapter, Comp	1	RFA-50X150MPT	81012665	2.5
63mm x 2" MNPT, R-flex, Adapter, Comp	1	RFA-63X200MPT	81012556	3.5
75mm x 2-1/2" MNPT, R-flex, Adapter, Comp	1	RFA-75X250MPT	81012589	4.0
90mm x 3" MNPT, R-flex, Adapter, Comp	1	RFA-90X300MPT	81012558	7.5
110mm x 4" MNPT, R-flex, Adapter, Comp	1	RFA-110X400MPT	81012590	10.0

**Compression Couplings** – PEX x PEX, brass – for joining R-flex coils together.



DESCRIPTION	QTY.	MODELNO.	ORDERNO.	WT.LBS.
1", R-flex, Coupling, Comp	1	RFC-1X100	81012837	2.0
32mm, R-flex, Coupling, Comp	1	RFC-32X32	81012838	2.5
40mm, R-flex, Coupling, Comp	1	RFC-40X40	81012839	3.5
50mm, R-flex, Coupling, Comp	1	RFC-50X50	81012840	5.0
63mm, R-flex, Coupling, Comp	1	RFC-63X63	81012841	8.0
75mm, R-flex, Coupling, Comp	1	RFC-75X75	81012842	10.5
90mm, R-flex, Coupling, Comp	1	RFC-90X90	81012843	17.0
110mm, R-flex, Coupling, Comp	1	RFC-110X110	81012844	24.0

**Compression Elbows** – PEX x PEX, brass



DESCRIPTION	QTY.	MODELNO.	ORDERNO.	WT.LBS.
1", R-flex, Elbow, Comp	1	RFE-1X100	81012845	2.0
32mm, R-flex, Elbow, Comp	1	RFE-32X32	81012846	2.5
40mm, R-flex, Elbow, Comp	1	RFE-40X40	81012847	4.0
50mm, R-flex, Elbow, Comp	1	RFE-50X50	81012848	5.5
63mm, R-flex, Elbow, Comp	1	RFE-63X63	81012849	8.5
75mm, R-flex, Elbow, Comp	1	RFE-75X75	81012850	11.0
90mm, R-flex, Elbow, Comp	1	RFE-90X90	81012851	18.5
110mm, R-flex, Elbow, Comp	1	RFE-110X110	81012852	27.0

**Compression Tees, Equal** – PEX x PEX x PEX, brass



DESCRIPTION	QTY.	MODEL NO.	ORDER NO.	WT.LBS.
1", R-flex, Tee, Comp	1	RFT-1X1X1	81012853	3.0
32mm, R-flex, Tee, Comp	1	RFT-32X32X32	81012854	3.0
40mm, R-flex, Tee, Comp	1	RFT-40X40X40	81012855	5.5
50mm, R-flex, Tee, Comp	1	RFT-50X50X50	81012856	7.5
63mm, R-flex, Tee, Comp	1	RFT-63X63X63	81012857	12.0
75mm, R-flex, Tee, Comp	1	RFT-75X75X75	81012858	16.0
90mm, R-flex, Tee, Comp	1	RFT-90X90X90	81012859	26.0
110mm, R-flex, Tee, Comp	1	RFT-110X110X110	81012860	37.0

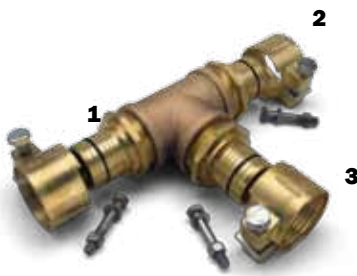
**Compression Tees, Unequal** – (1)Run x (2)Run x (3)Branch = PEX x PEX x PEX, brass

DESCRIPTION	(1 - 2 - 3)	QTY.	MODEL NO.	ORDER NO.	WT.LBS.
40 x 40 x 32, R-flex, Tee, Comp	1	1	RFT-40X40X32	81012861	5.0
40 x 32 x 40, R-flex, Tee, Comp	1	1	RFT-40X32X40	81012862	5.0
40 x 32 x 32, R-flex, Tee, Comp	1	1	RFT-40X32X32	81012863	5.0

**SEE NEXT PAGE  
FOR IMAGE**

## R-flex Connections

**Compression Tees, Unequal (continued)** – (1)Run x (2)Run x (3)Branch = PEX x PEX x PEX, brass



DESCRIPTION (1 - 2 - 3)	QTY.	MODEL NO.	ORDER NO.	WT.LBS.
50 x 50 x 40, R-flex, Tee, Comp	1	RFT-50X50X40	81012864	6.5
50 x 40 x 50, R-flex, Tee, Comp	1	RFT-50X40X50	81012865	6.5
50 x 40 x 40, R-flex, Tee, Comp	1	RFT-50X40X40	81012866	6.5
63 x 63 x 50, R-flex, Tee, Comp	1	RFT-63X63X50	81012867	11.0
63 x 50 x 63, R-flex, Tee, Comp	1	RFT-63X50X63	81012868	11.0
63 x 50 x 50, R-flex, Tee, Comp	1	RFT-63X50X50	81012869	11.0
75 x 75 x 63, R-flex, Tee, Comp	1	RFT-75X75X63	81012870	16.0
75 x 63 x 75, R-flex, Tee, Comp	1	RFT-75X63X75	81012871	16.0
75 x 63 x 63, R-flex, Tee, Comp	1	RFT-75X63X63	81012872	16.0
90 x 90 x 75, R-flex, Tee, Comp	1	RFT-90X90X75	81012873	23.0
90 x 75 x 90, R-flex, Tee, Comp	1	RFT-90X75X90	81012874	23.0
90 x 75 x 75, R-flex, Tee, Comp	1	RFT-90X75X75	81012875	23.0
110 x 110 x 90, R-flex, Tee, Comp	1	RFT-110X110X90	81012876	35.0
110 x 90 x 110, R-flex, Tee, Comp	1	RFT-110X90X110	81012877	35.0
110 x 90 x 90, R-flex, Tee, Comp	1	RFT-110X90X90	81012878	35.0

### Threaded Brass Coupling (without R-flex Adapters)



DESCRIPTION	QTY.	MODEL NO.	ORDER NO.	WT.LBS.
1", Coupling, Brass, FPT	1	RC-100FPTX100FPT	81012902	1.0
1-1/4", Coupling, Brass, FPT	1	RC-125FPTX125FPT	81012903	1.0
1-1/2", Coupling, Brass, FPT	1	RC-150FPTX150FPT	81012904	1.0
2", Coupling, Brass, FPT	1	RC-200FPTX200FPT	81012905	1.5
2-1/2", Coupling, Brass, FPT	1	RC-250PTFX250FPT	81012906	3.0
3", Coupling, Brass, FPT	1	RC-300FPTX300FPT	81012907	4.0
4", Coupling, Brass, FPT	1	RC-400FPTX400FPT	81012908	5.5

### Threaded Brass Elbows (without R-flex Adapters)



DESCRIPTION	QTY.	MODEL NO.	ORDER NO.	WT.LBS.
1", Elbow, Brass, FPT	1	RE-100PTFX100FPT	81012909	1.0
1-1/4", Elbow, Brass, FPT	1	RE-125FPTX125FPT	81012910	1.0
1-1/2", Elbow, Brass, FPT	1	RE-150FPTX150FPT	81012911	1.5
2", Elbow, Brass, FPT	1	RE-200FPT200FPT	81012912	2.0
2-1/2", Elbow, Brass, FPT	1	RE-250FPTX250FPT	81012913	3.5
3", Elbow, Brass, FPT	1	RE-300FPTX300FPT	81012914	5.5
4", Elbow, Brass, FPT	1	RE-400FPTX400FPT	81012915	9.0

### Threaded Brass Tees (without R-flex Adapters)



DESCRIPTION	QTY.	MODEL NO.	ORDER NO.	WT.LBS.
1", Tee, Brass, FPT	1	RT-100FPTX100FPTX100FPT	81012916	1.0
1-1/4", Tee, Brass, FPT	1	RT-125FPTX125FPTX125FPT	81012917	1.5
1-1/2", Tee, Brass, FPT	1	RT-150FPTX150FPTX150FPT	81012918	2.0
2", Tee, Brass, FPT	1	RT-200FPTX200FPTX200FPT	81012919	3.0
2-1/2", Tee, Brass, FPT	1	RT-250FPTX250FPTX250FPT	81012920	5.0
3", Tee, Brass, FPT	1	RT-300FPTX300FPTX300FPT	81012921	7.5
4", Tee, Brass, FPT	1	RT-400FPTX400FPTX400FPT	81012922	10.5

## R-flex Bushings & Casings

**Threaded Brass Bushings (without R-flex Adapters)** – Use with Threaded Brass Tees to connect different R-flex run sizes.



DESCRIPTION	QTY.	MODEL NO.	ORDER NO.	WT.LBS.
1-1/4"MPT x 1" FPT, Bushing, Brass	1	RB-125MPTX100FPT	81012923	0.5
1-1/2"MPT x 1-1/4" FPT, Bushing, Brass	1	RB-150MPTX125FPT	81012924	0.5
1-1/2"MPT x 1" FPT, Bushing, Brass	1	RB-150MPTX100FPT	81012962	0.5
2"MPT x 1-1/2" FPT, Bushing, Brass	1	RB-200MPTX150FPT	81012925	1.0
2"MPT x 1" FPT, Bushing, Brass	1	RB-200MPTX100FPT	81012963	1.0
2-1/2"MPT x 2" FPT, Bushing, Brass	1	RB-250MPTX200FPT	81012926	1.0
2-1/2"MPT x 1-1/2" FPT, Bushing, Brass	1	RB-250MPTX150FPT	81012964	1.5
3"MPT x 2-1/2" FPT, Bushing, Brass	1	RB-300MPTX250FPT	81012927	2.0
3"MPT x 2" FPT, Bushing, Brass	1	RB-300MPTX200FPT	81012965	2.0
4"MPT x 3" FPT, Bushing, Brass	1	RB-400MPTX300FPT	81012928	3.5
4"MPT x 2-1/2" FPT, Bushing, Brass	1	RB-400MPTX250FPT	81012966	3.0

**Protective Sleeve Casing for R-flex** – For waterproof sealing and insulating of straight connections. Includes 2 HDPE halves, insulation, sealer kit, and bolts. Must add shrink caps to seal ends of R-flex.



DESCRIPTION	QTY.	MODEL NO.	ORDER NO.	WT.LBS.
125-200mm pipes, R-flex Casing, Straight Sleeve	1	RFCS-125200	81012549	13.0

**Protective Y Casing for R-flex** – For waterproof sealing and insulating of dual to single connections. Includes 2 HDPE halves, insulation, sealer kit, and bolts. Must add shrink caps to seal ends of R-flex.



DESCRIPTION	QTY.	MODEL NO.	ORDER NO.	WT.LBS.
125-200mm pipes, R-flex Casing, Y	1	RFKY-125200	81012547	19.0

**Protective Elbow Casing for R-flex** – For waterproof sealing and insulating of elbow connections. Includes 2 HDPE halves, insulation, sealer kit, and bolts. Must add shrink caps to seal ends of R-flex.



DESCRIPTION	QTY.	MODEL NO.	ORDER NO.	WT.LBS.
125-200mm pipes, R-flex Casing, Elbow	1	RFCE-125200	81012548	21.0

**Protective Tee Casing for R-flex** – For waterproof sealing and insulating of tee connections. Includes 2 HDPE halves, insulation, sealer kit, and bolts. Must add shrink caps to seal ends of R-flex.



DESCRIPTION	QTY.	MODEL NO.	ORDER NO.	WT.LBS.
125-200mm pipes, R-flex Casing, Tee	1	RFCT-125200	81012550	26.0

## R-flex Accessories

**Protective Inspection Chamber for R-flex** – Allows access to connections and/or valves. Includes HDPE chamber with 6 connection points, inspection lid, sealer kit and screws. Must add shrink caps to seal ends of R-flex, and jacket repair sleeves for sealing the R-flex to the chamber.



DESCRIPTION	QTY.	MODEL NO.	ORDER NO.	WT.LBS.
125-200mm pipes, R-flex Inspect Chamber	1	RFIC-125200	81012551	75.0

**R-flex Jacket Repair Tape** – To repair accidental damage to R-flex outer cover. Wrap the tape over damaged area and heat with heat gun.



DESCRIPTION	QTY.	MODEL NO.	ORDER NO.	WT.LBS.
3/4" x 33', R-flex Heat Shrink Repair Tape	1	RFRT-075X33	81012591	7.0

**R-flex Jacket Repair Sleeve** – To repair accidental damage to R-flex outer cover. Slide the sleeve over damaged area and heat with heat gun.



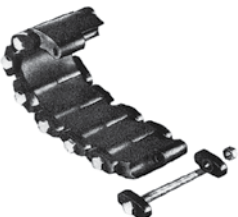
DESCRIPTION	QTY.	MODEL NO.	ORDER NO.	WT.LBS.
125mm, R-flex Shrink Repair Sleeve	1	RFRS-125	81012592	1.0
160mm, R-flex Shrink Repair Sleeve	1	RFRS-160	81012593	1.0
200mm, R-flex Shrink Repair Sleeve	1	RFRS-200	81012594	1.0

**R-flex Caution Tape** – Place in backfill along entire length of R-flex.



DESCRIPTION	QTY.	MODEL NO.	ORDER NO.	WT.LBS.
100 ft., R-flex Caution Tape	1	RFCT	81012947	1.0

**R-flex Link Belt** – Used when boring a hole in an existing wall. Seals wall penetrations between R-flex outer cover and wall.



DESCRIPTION	QTY.	MODEL NO.	ORDER NO.	WT.LBS.
125mm outer casing, R-flex Link Belt	1	RFLB-125	81012948	1.5
160mm outer casing, R-flex Link Belt	1	RFLB-160	81012949	5.0
200mm outer casing, R-flex Link Belt	1	RFLB-200	81012950	6.0

**R-flex Wall Sleeve & Link Belt Kit** – Used when wall is to be poured in place. Seals wall penetrations between R-flex outer cover and wall.



DESCRIPTION	QTY.	MODEL NO.	ORDER NO.	WT.LBS.
125mm outer casing, R-flex Wall Sleeve and Belt Kit	1	RFLBKit-125	81012931	12.0
160mm outer casing, R-flex Wall Sleeve and Belt Kit	1	RFLBKit-160	81012932	10.0
200mm outer casing, R-flex Wall Sleeve and Belt Kit	1	RFLBKit-200	81012933	13.0

## Determining size and amount of R-flex to order

R-flex U.S. equivalents

	Metric	25 mm	32 mm	40 mm	50 mm	63 mm	75 mm	90 mm	110 mm
	US Equivalent	1"	1-1/4"	1-1/2"	2"	2-1/2"	3"	3-1/2"	4"
Single	160 mm			81012929	81012886	81012887			
	200 mm						81012889	81012890	81012891
Dual	125 mm	81012879	81012880						
	160 mm			81012882					
	200 mm				81012884	81012885			
Approx. Max. Flow, gpm		12	17	25	40	70	90	140	200

**Important:** Add approximately 5% to the straight line distance to allow for a serpentine pattern of R-Flex.

## R-flex Specifications Chart

Specifications (conforms to DIN 16892, SDR-11)														
	Order #	Description	PEX ID	PEX OD	Jacket OD	Bend Radius	Coil Length	Coil Diameter	Coil Height	Coil Weight	Fluid Cap. /100m (328ft)	Insulation Thickness	Casing R-Value	
Single	81012929	160/40 R-flex	32.6 mm (1.28")	40 mm (1.57")	160 mm (6.30")	350 mm (13.8")	100 m** (328 ft)	2300 mm (90.6")	850 mm (33.50")	232 kg (512 lbs)	83.00 L (21.93 gal)	47.5 mm (1.88")	6.79	
	81012886	160/50 R-flex	40.8 mm (1.61")	50.0 mm (1.97")		450 mm (17.80")				248 kg (547 lbs)	131.31 L (34.69 gal)	42.5 mm (1.68")	6.07	
	81012887	160/63 R-flex	51.6 mm (2.03")	63.0 mm (2.48")		550 mm (21.7")				278 kg (613 lbs)	208.76 L (55.15 gal)	37.0 mm (1.46")	5.27	
	81012889	200/75 R-flex	61.4 mm (2.42")	75.0 mm (2.95")	200 mm (7.90")	800 mm (31.5")			1400 mm (55.20")	416 kg (917 lbs)	296.67 L (78.37 gal)	52.0 mm (2.05")	7.4	
	81012890	200/90 R-flex	73.6 mm (2.90")	90.0 mm (3.54")		1100 mm (43.4")				473 kg (1,043 lbs)	426.02 L (112.55 gal)	44.0 mm (1.74")	6.28	
	81012891	200/110 R-flex	90.0 mm (3.55")	110.0 mm (4.33")		1200 mm (47.3")				564 kg (1,244 lbs)	638.41 L (168.65 gal)	34.0 mm (1.33")	4.84	
Dual	81012879	125/2x1 R-flex*	0.863" (21.92 mm)	1.125" (28.58 mm)	4.90" (125 mm)	11.80" (300 mm)	100 m** (328 ft)	2300 mm (90.60")	82.70" (2100 m)	27.60" (700 mm)	358 lbs (162 kg)	19.94 gal (75.46 L)	1.11" (28.0 mm)	4.01
	81012880	125/2x32 R-flex	26.2 mm (1.03")	32.0 mm (1.26")	125 mm (4.90")	300 mm (11.80")				2100 mm (82.70")	700 mm (27.60")	182 kg (402 lbs)	107.48 L (28.40 gal)	22.3 mm (0.88")
	81012882	160/2x40 R-flex	32.6 mm (1.28")	40.0 mm (1.57")	160 mm (6.30")	600 mm (23.70")			850 mm (33.50")	263 kg (580 lbs)	166.00 L (43.86 gal)	34.0 mm (1.34")	4.84	
	81012884	200/2x50 R-flex	40.8 mm (1.61")	50.0 mm (1.97")	200 mm (7.90")	800 mm (31.50")				1400 mm (55.20")	403 kg (889 lbs)	262.62 L (69.38 gal)	46.0 mm (1.81")	6.57
	81012885	200/2x63 R-flex	51.6 mm (2.03")	63.0 mm (2.48")		1200 mm (47.30")					464 kg (1,023 lbs)	417.52 L (110.30 gal)	33.0 mm (1.30")	4.69

\* Pex pipe is certified to ASTM F876, SDR-9 dimensions.

\*\* Custom lengths are available upon request. Contact distributor for details.